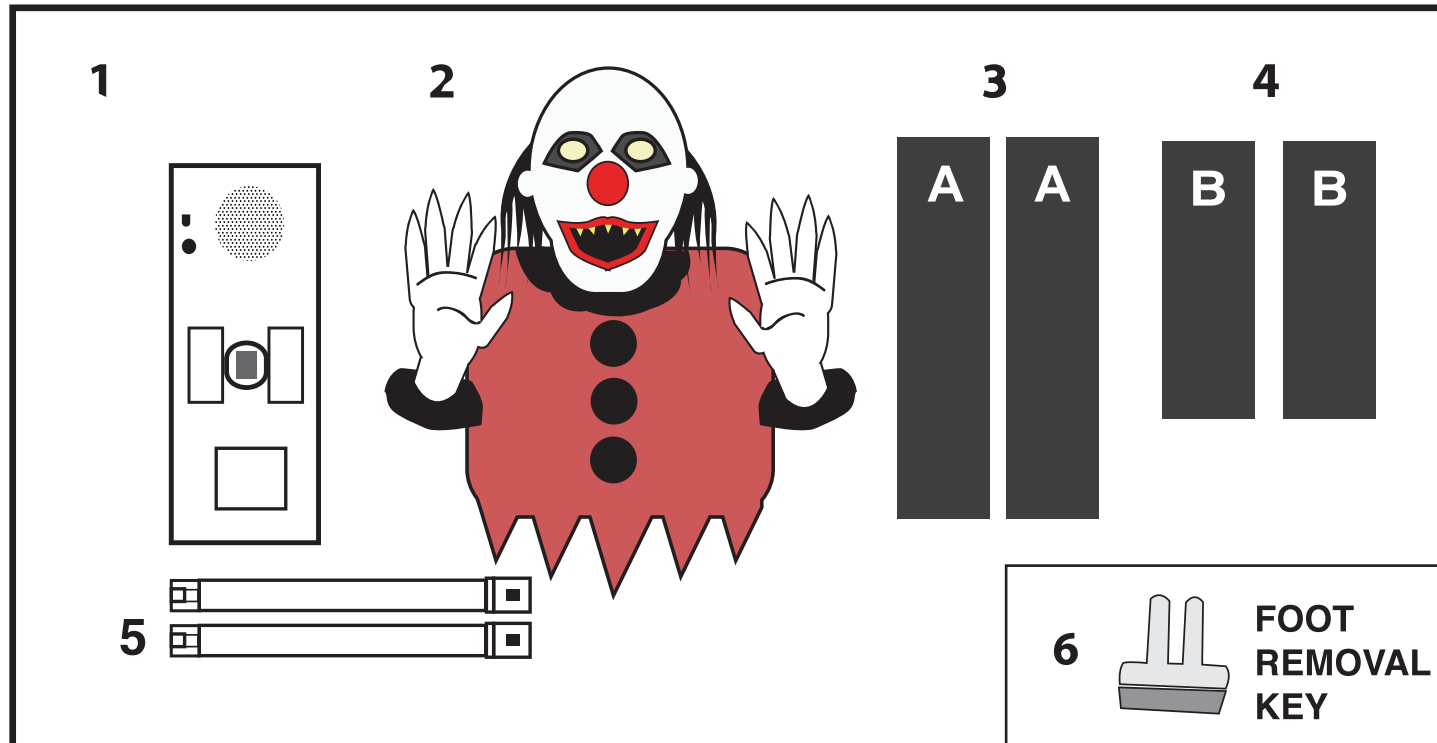


DEAD HUMOR

INSTALLATION AND OPERATING INSTRUCTIONS

KEEP ALL PLASTIC AND WIRE PARTS AWAY FROM CHILDREN



PARTS:

1. MODULE
2. HEAD, HANDS, CLOTHING
3. FRONT AND BACK FEET
4. SIDE FEET
5. POLES
6. FOOT REMOVAL KEY

1. Insert **FRONT, BACK** and two **SIDE FEET** into the bottom of the module. **(Match A to A) (Match B to B)**

Press to make sure each **FOOT** is flush with rectangular base. To remove *** FOOT**, insert **FOOT REMOVAL KEY** (included) into holes on bottom to release locks and pull.

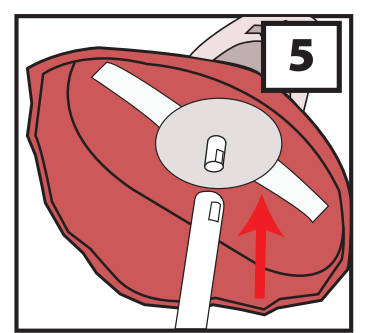
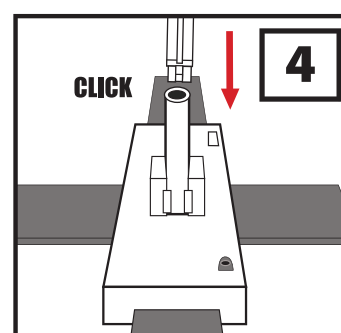
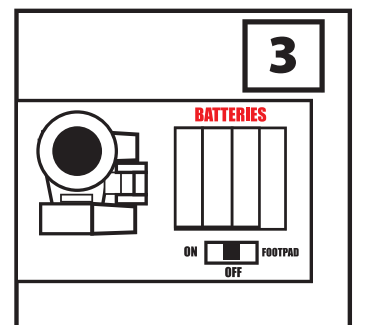
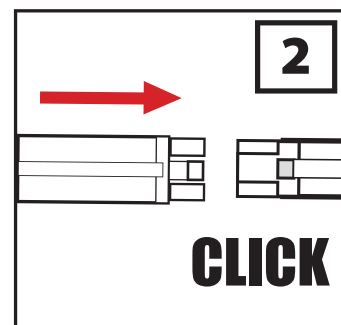
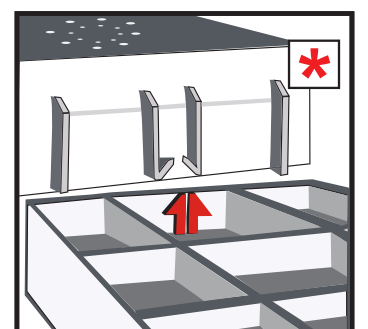
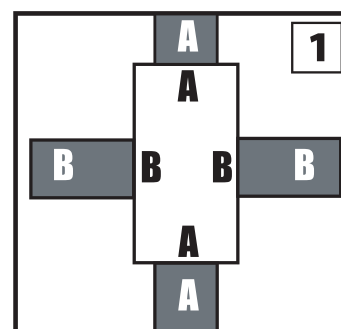
2. Connect **POLES**. Snap to lock.

3. Install fresh, new alkaline batteries (4 "AA") into battery compartment located on top of **MODULE** or connect 6V 2A adapter. (not included)

4. Insert **POLES** into **MODULE**. Snap to lock.

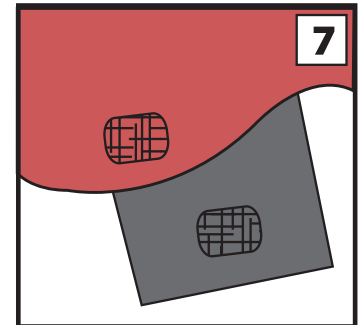
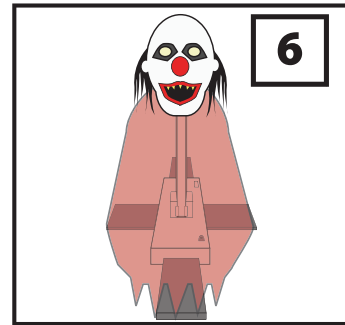
5. Place **HEAD, HANDS** and **CLOTHING** on top of **POLES**. Snap to lock.

Note: Make sure there are no obstructions to hinder Dead Humor's movement.
Turn switch to the ON position to operate in sound activation mode.
Make a loud sound (clap) to activate.
Leave switch in OFF position when not in use.



DEAD HUMOR

6. Drape fabric down over **MODULE** and **FEET**.
7. Attach hook and loop fasteners under the clothing to opposite hook and loop fasteners located on all four feet.

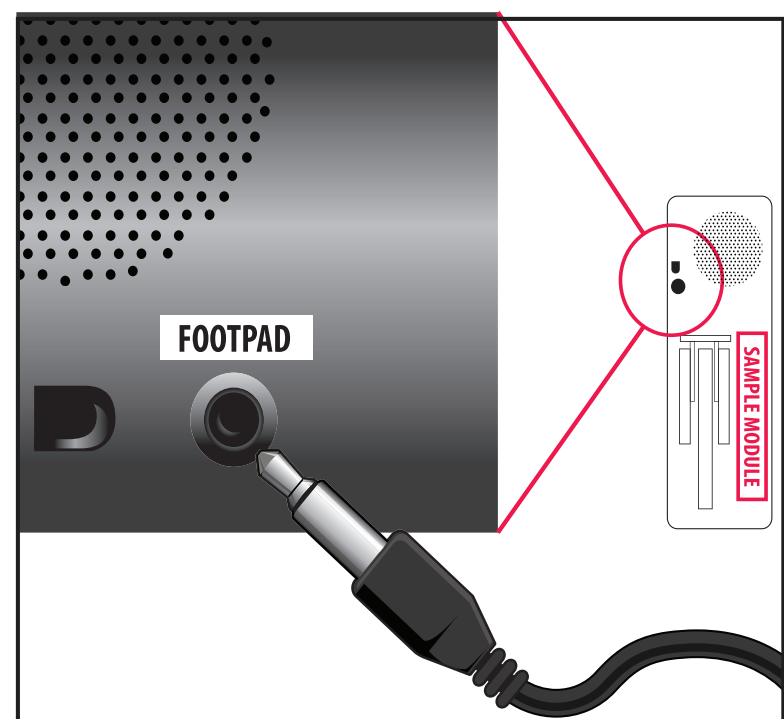


Optional Footpad Setup

Follow steps #1 through 6 on initial installation first.

1. Connect the cable from the optional footpad to the jack labeled FOOTPAD located on the base.
2. Place the switch on the base into the 'FOOTPAD' position to enable FOOTPAD activation.
3. Step on FOOTPAD to activate the scary sequence. (go to instruction #7 to continue setup)

*Footpads are sold separately and can be purchased at www.spirithalloween.com



If you hear a constant "clicking" sound and this item does not function properly, it means that there is an obstruction preventing the pole from lowering fully (for example: rock, bush, incline, etc.). The clicking sound does not mean that it is broken, just remove any obstruction and the item should function normally.

OUTDOOR WARNING: For best overall performance, we recommend you to operate your item in a sheltered outdoor area. We also recommend you bring your item indoors during adverse weather (extreme cold, strong winds and/or rain). This item operates best outdoors in temperatures above freezing (32°F). Tekky Toys recommends using fresh alkaline batteries for best operating performance.



TEKKY

VISIT US AT TEKKYTOYS.COM



SMART PHONE SCAN SETUP VIDEO



Surface washable only.
ALL NEW MATERIALS:
PLASTIC, POLYESTER,
POLYESTER FIBER
DEAD HUMOR™ Spirit Halloween
Copyright © 2013 Spirit Halloween
All Rights Reserved.
MADE IN CHINA

Warning! This item is not a toy. For decoration only. Small parts, choking hazard.
This product is intended for use by persons 15 years of age and older.
Not intended for use by children ages 14 years and younger.



DO NOT RETURN THIS ITEM TO THE STORE!
If experiencing technical difficulties, please go to
www.tekkytoys.com for assistance.