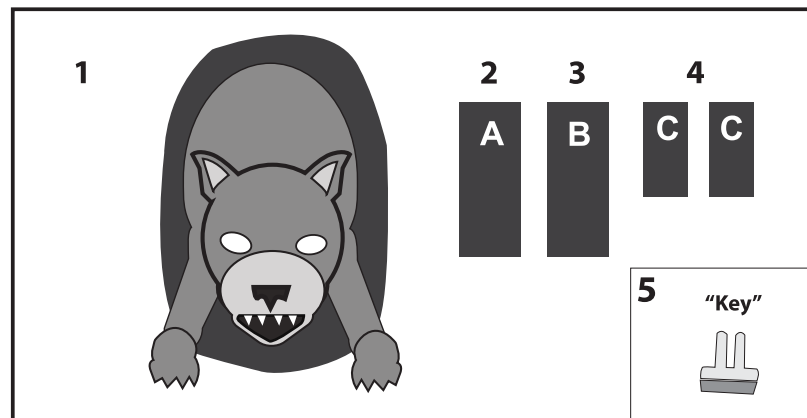


JUMPING DOG

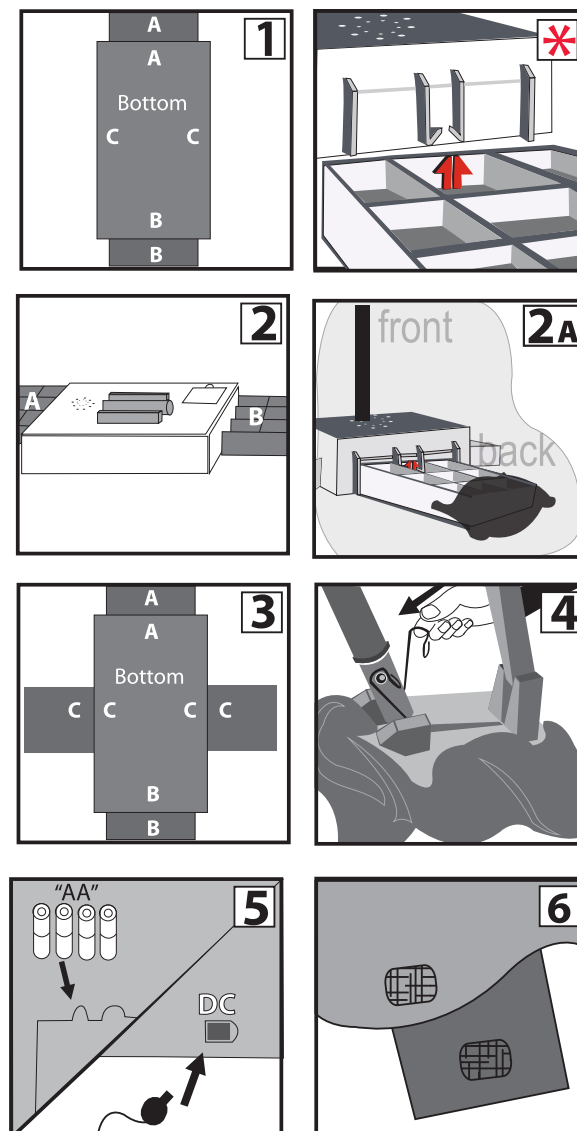
INSTALLATION AND OPERATING INSTRUCTIONS

KEEP ALL PLASTIC AND WIRE PARTS AWAY FROM CHILDREN

- PARTS:**
1. MODULE WITH DOG
 2. FRONT FOOT
 3. BACK FOOT
 4. SIDE FEET
 5. FOOT REMOVAL "KEY"



1. Insert **FRONT FOOT** into bottom of **MODULE WITH DOG** until it locks into place. **(Match A to A)**
 - * Note: Press to make sure each FOOT is flush with rectangular base. To remove FOOT, insert plastic "KEY" (included) into holes on bottom to release locks, twist and pull.
 2. Insert **BACK FOOT** into bottom of **MODULE WITH DOG** until it locks into place. **(Match B to B)**
 - * Note: When needed, add weight or tape down feet to increase stability. (See illustration 2A)
 3. Insert **SIDE FEET** into bottom of **MODULE WITH DOG** until they lock into place. **(Match C to C)**
 4. Lift **DOG** wrapped in fabric until poles are vertical and attach 2 springs as shown.
 5. Insert 4 AA batteries into the battery compartment located on the top of the **MODULE** or connect the DC adapter. (Sold separately)
- Note:** Make sure there are not obstructions to hinder the Dog's movement. Turn switch on top of **MODULE** to ON to operate in sound and motion activation mode. Make a loud sound (clap) or move in front of the item to activate. Leave switch in OFF position when not in use.
6. Release tie holding fabric and attach hook and loop fasteners under fabric to the opposite hook and loop fasteners located on all four feet.

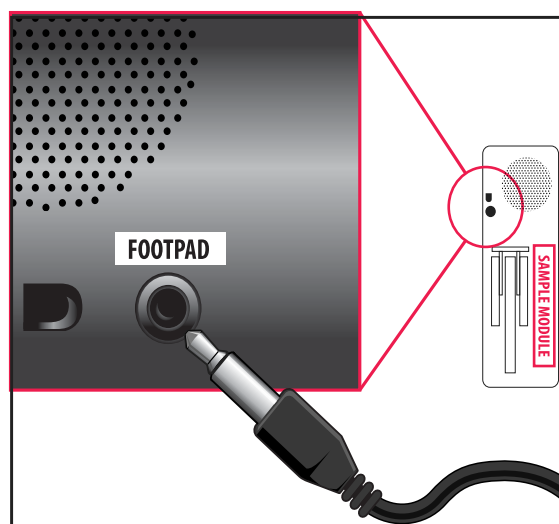


Optional Footpad Setup

Follow steps #1 through 5 on initial installation first.

1. Connect the cable from the optional footpad to the jack labeled FOOTPAD located on the MODULE.
2. Place the switch on the MODULE into the 'FOOTPAD' position to enable FOOTPAD activation.
3. Step on FOOTPAD to activate the scary sequence. (go to instruction #6 to continue setup)

*Footpads are sold separately and can be purchased at www.spirithalloween.com



SMART PHONE SCAN SETUP VIDEO



If you hear a constant "clicking" sound and this item does not function properly, it means that there is an obstruction preventing the item from operating (for example: rock, bush, incline, etc.). The clicking sound does not mean that it is broken, just remove any obstruction and the item should function normally.

Requires 4 'AA' Batteries
or optional DC adapter (6V 2A)
Surface washable only.
ALL NEW MATERIALS:
PLASTIC, POLYESTER,
POLYESTER FIBER
JUMPING DOG
is a trademark of Tekky Toys.
Copyright © 2013 Tekky Toys.
All Rights Reserved.
Made in China
PATENT PENDING (13/352,490)

****No weight should be placed onto item****

****For indoor use only****

Warning! This item is not a toy. For decoration only. Small parts, choking hazard.
This product is intended for use by persons 15 years of age and older.
Not intended for use by children ages 14 years and younger.

WARNING
DO NOT TURN THIS ITEM ON UNTIL YOU HAVE COMPLETELY FINISHED ASSEMBLY.

Stay clear of item while operating.



DO NOT RETURN THIS ITEM TO THE STORE!
If experiencing technical difficulties, please go to www.tekkytoys.com for assistance.



VISIT US AT TEKKYTOYS.COM

